

- 1.) Soda caps
- 2.) Poster board

Brainstorming page for Christopher W

Ideas

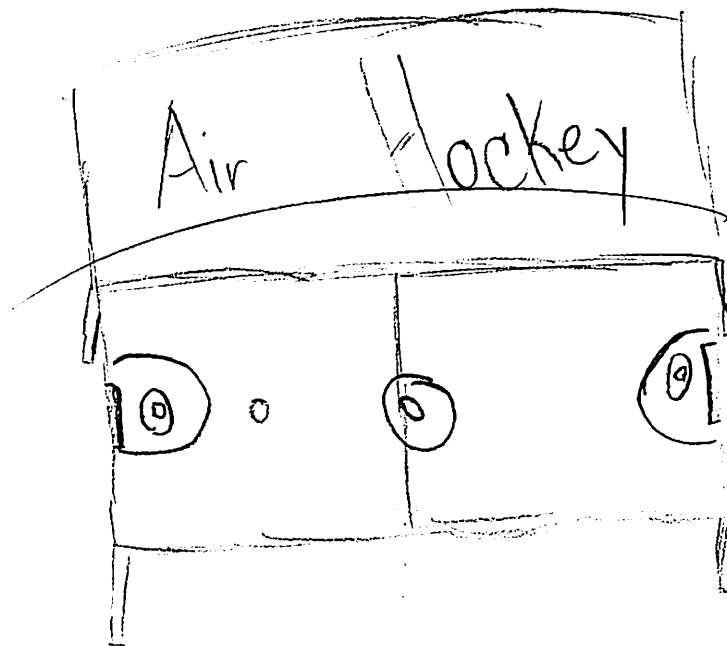
Air Hockey

1) Soda cap

2) tap

3) Card board box

Drawings

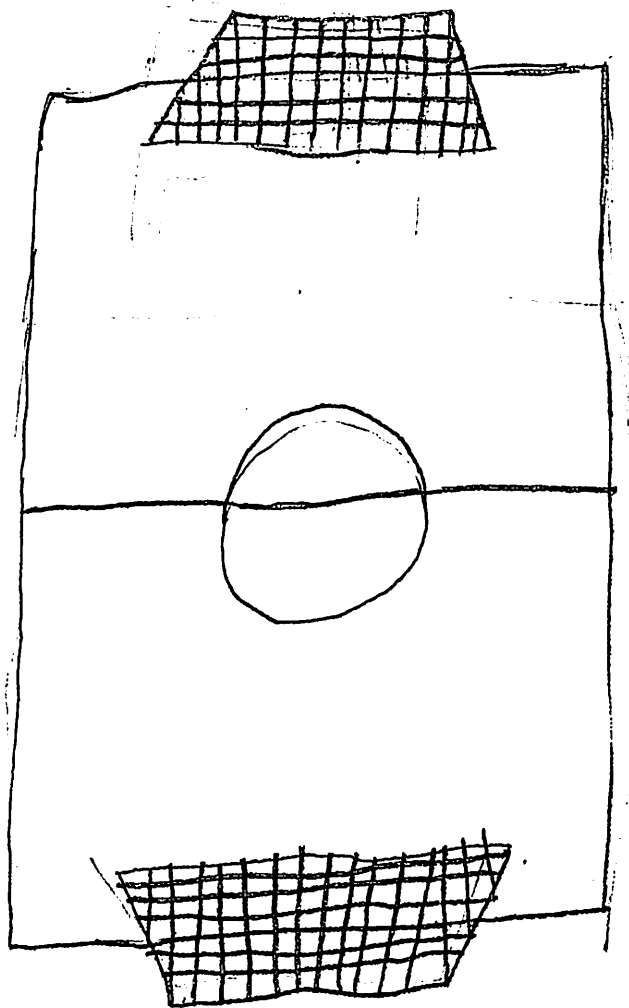


*"Failure to plan is planning to fail." -John R. Wooden*

Brainstorming page for \_\_\_\_\_

Ideas  
soccer

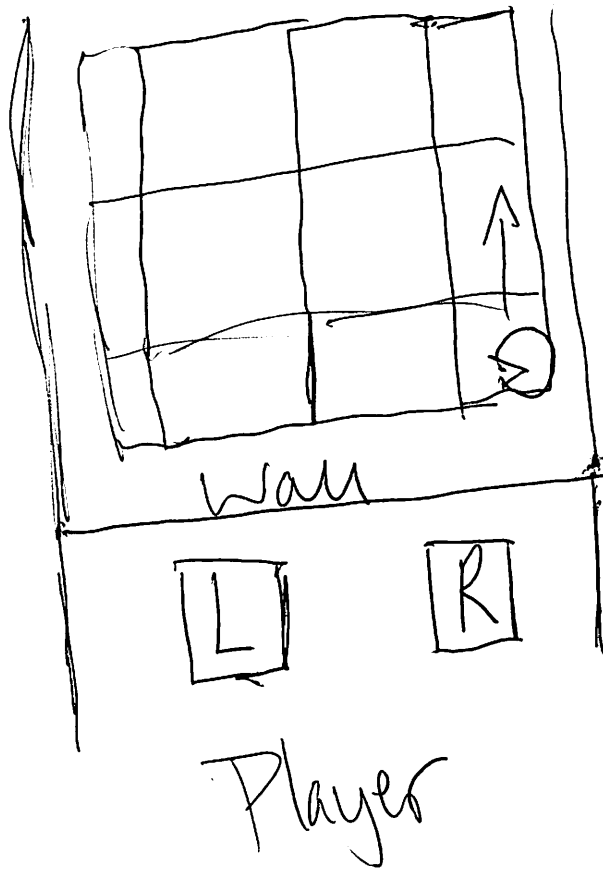
Drawings



*"Failure to plan is planning to fail." -John R. Wooden*

# Pacman

Person working game



Player holds up  
cards to  
move

Pacman moves to  
next intersection  
with goal to get  
to a goal  
Castle?

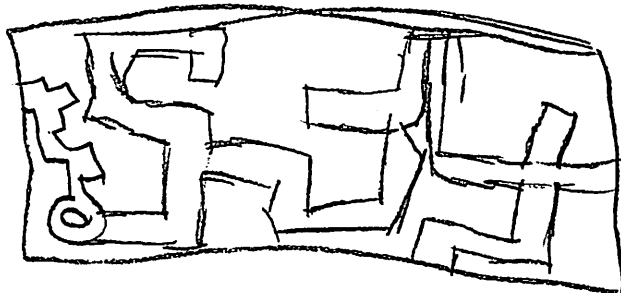
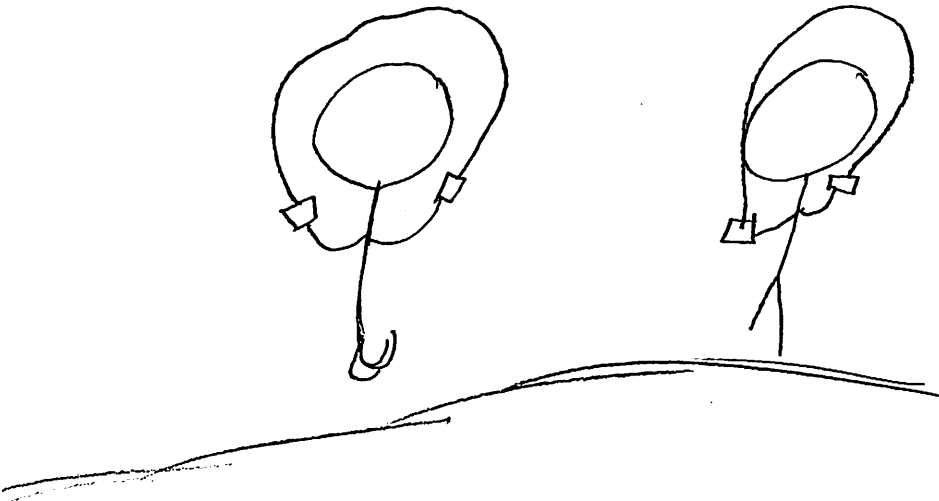
moveable goal?

Brainstorming page for Keyla

Ideas

jamery rop contest  
marble mase

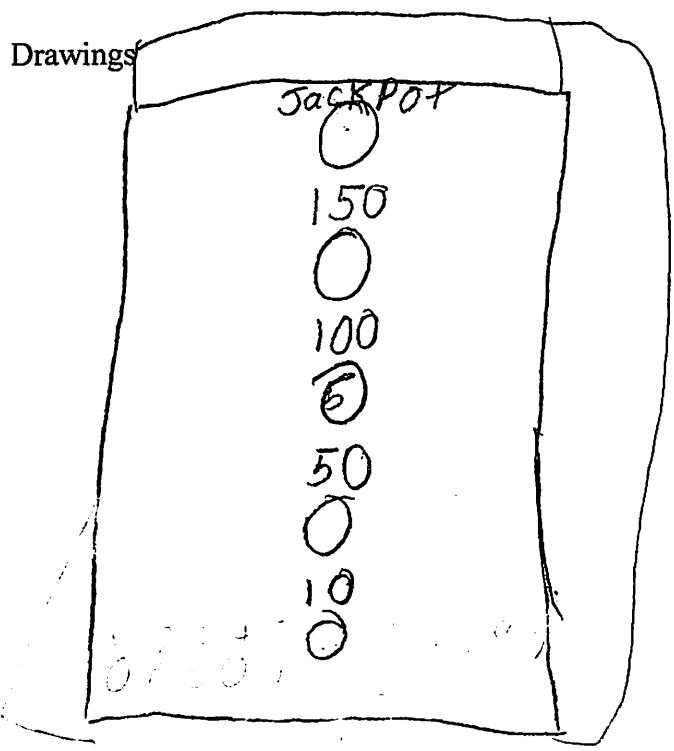
Drawings



*"Failure to plan is planning to fail." -John R. Wooden*

Brainstorming page for Elias

Ideas



# Soda caps

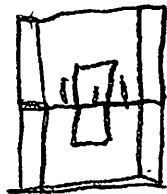
- ① Were going to make a hole  
Put two boxes on top of each other.

Brainstorming page for Mario R.

Ideas

Fire ball

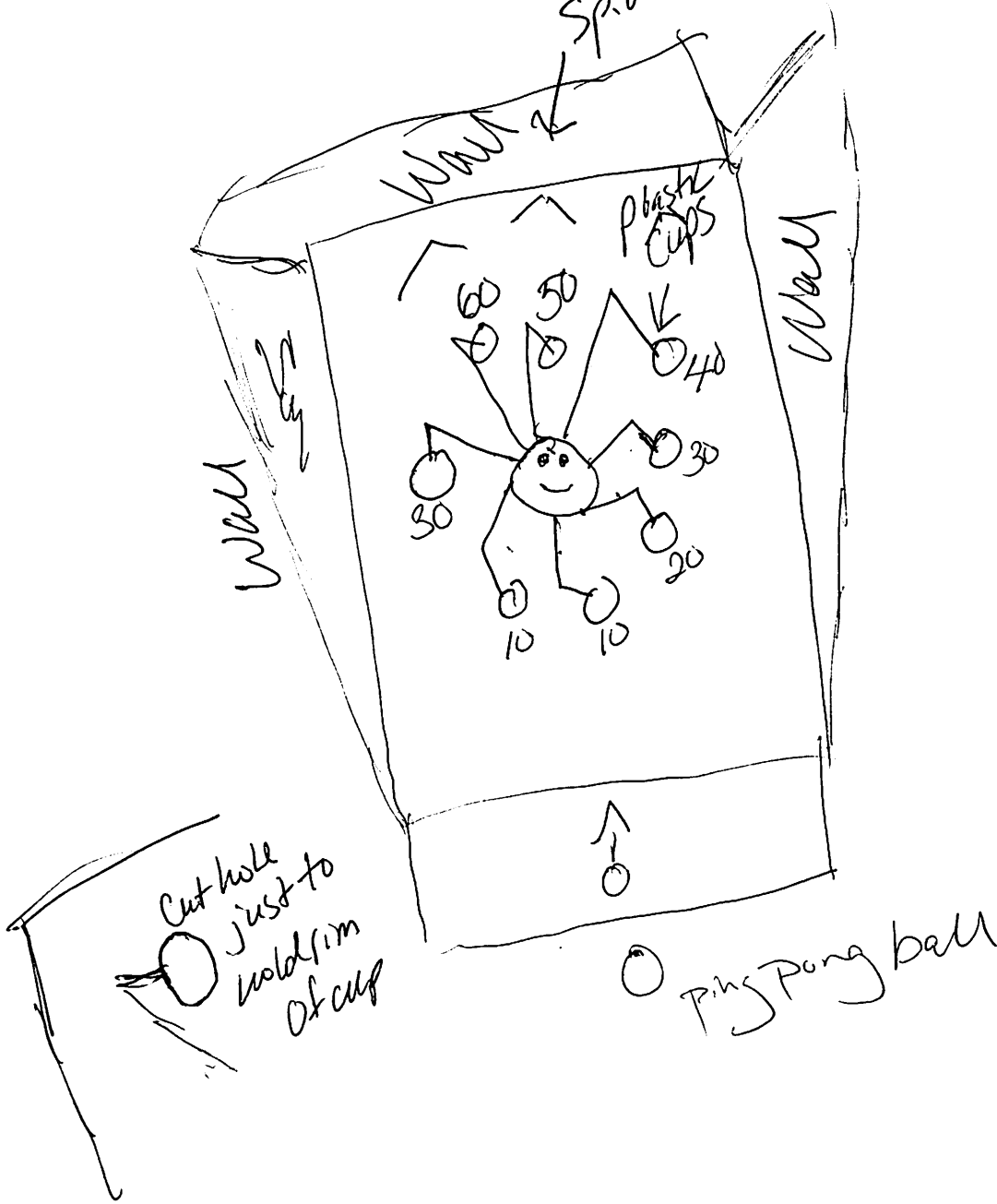
Drawings





# Spider man

Spider man logo



- 100+ wins top prize
- 50+ wins 2nd prize